



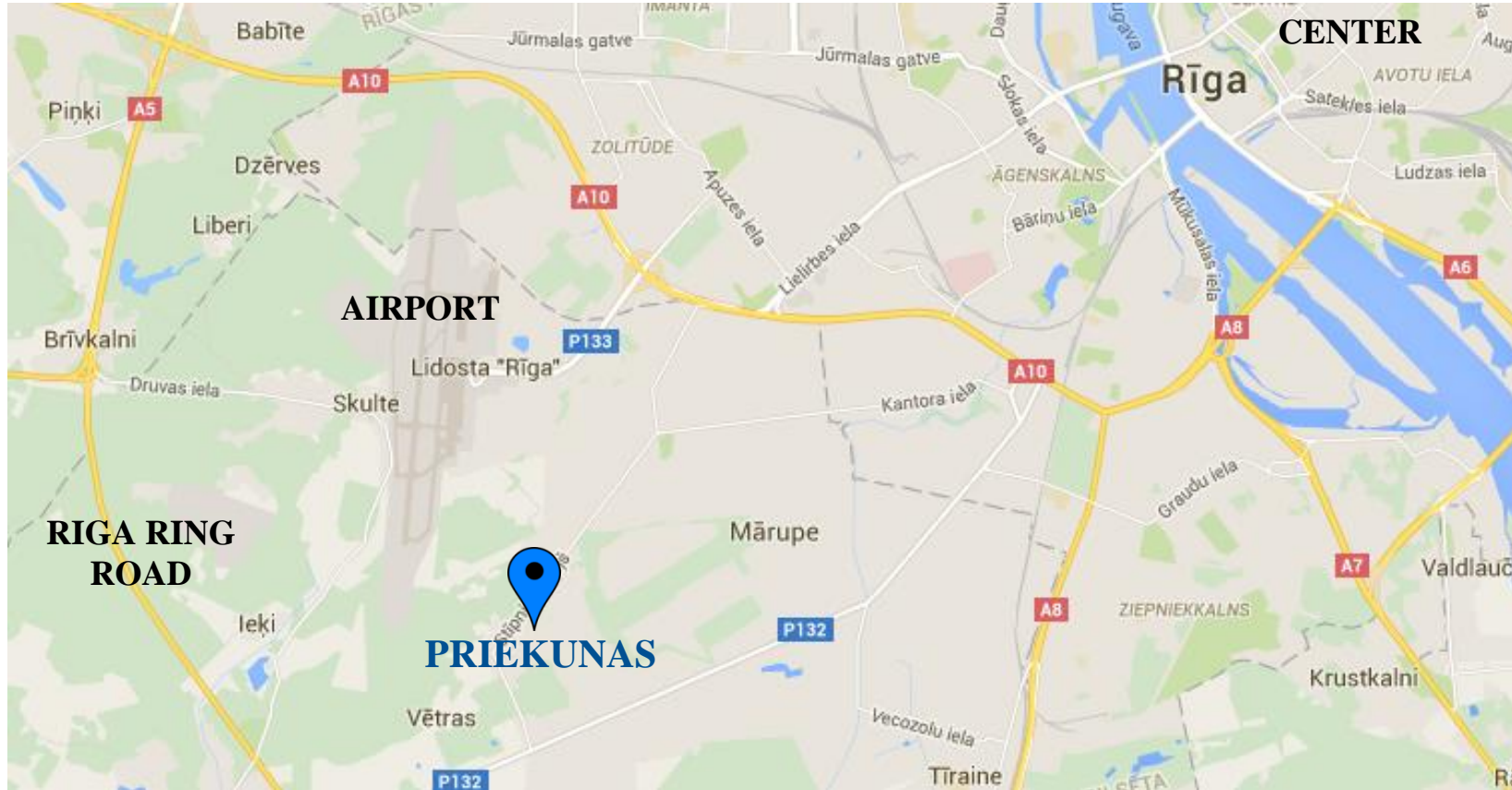
‘Priekunas’ (Riga Metro Area)

Land for Commercial Development

2018



Location



- Located on an intersection on one of the main roads of Marupe (nearby Riga International Airport);
- Public transport is available on bypassing Stipnieku road;
- Riga city center is only 14 km away.

Aerial map



General information

Total area:

5.42 ha (5 land plots)

Available utilities:

Gas, Water, Sewage (connection from street)

Land zoning:

**Commercial development
and light manufacturing**

Current status:

Detailed plan completed

Allowed development includes:

**Office, Retail store,
Light manufacturing etc.**

Max. Building intensity:

60% (each plot)

Max. Number of floors:

3

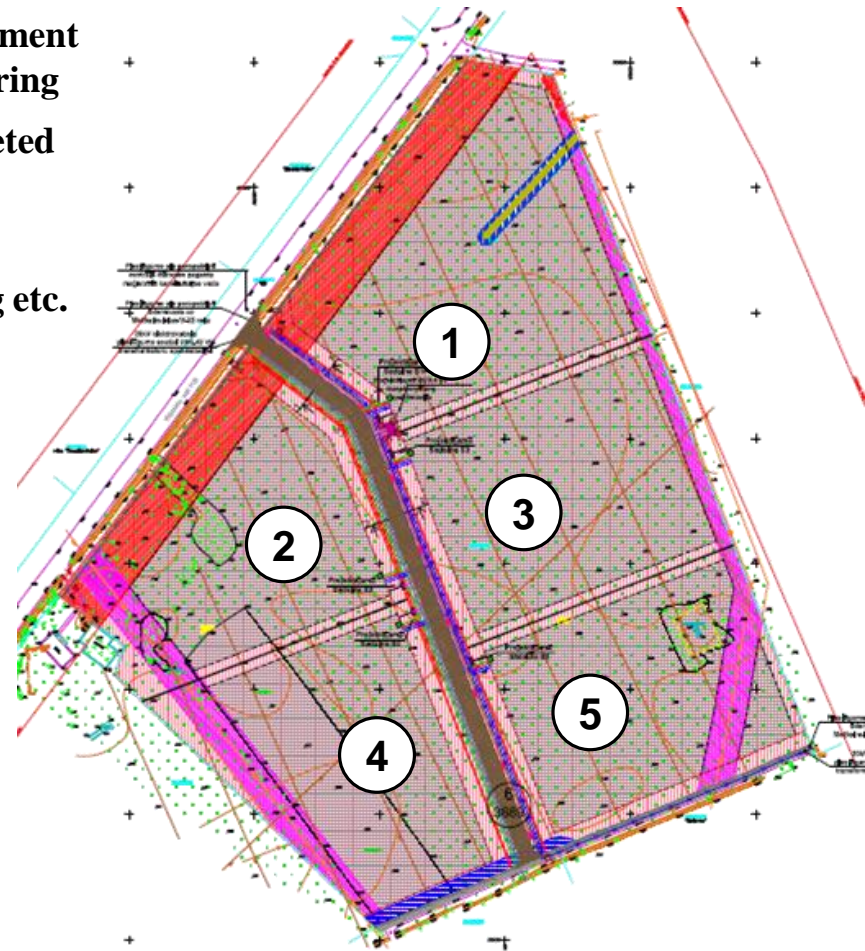
Plot 1: **1.31 ha**

Plot 2: **1.05 ha**

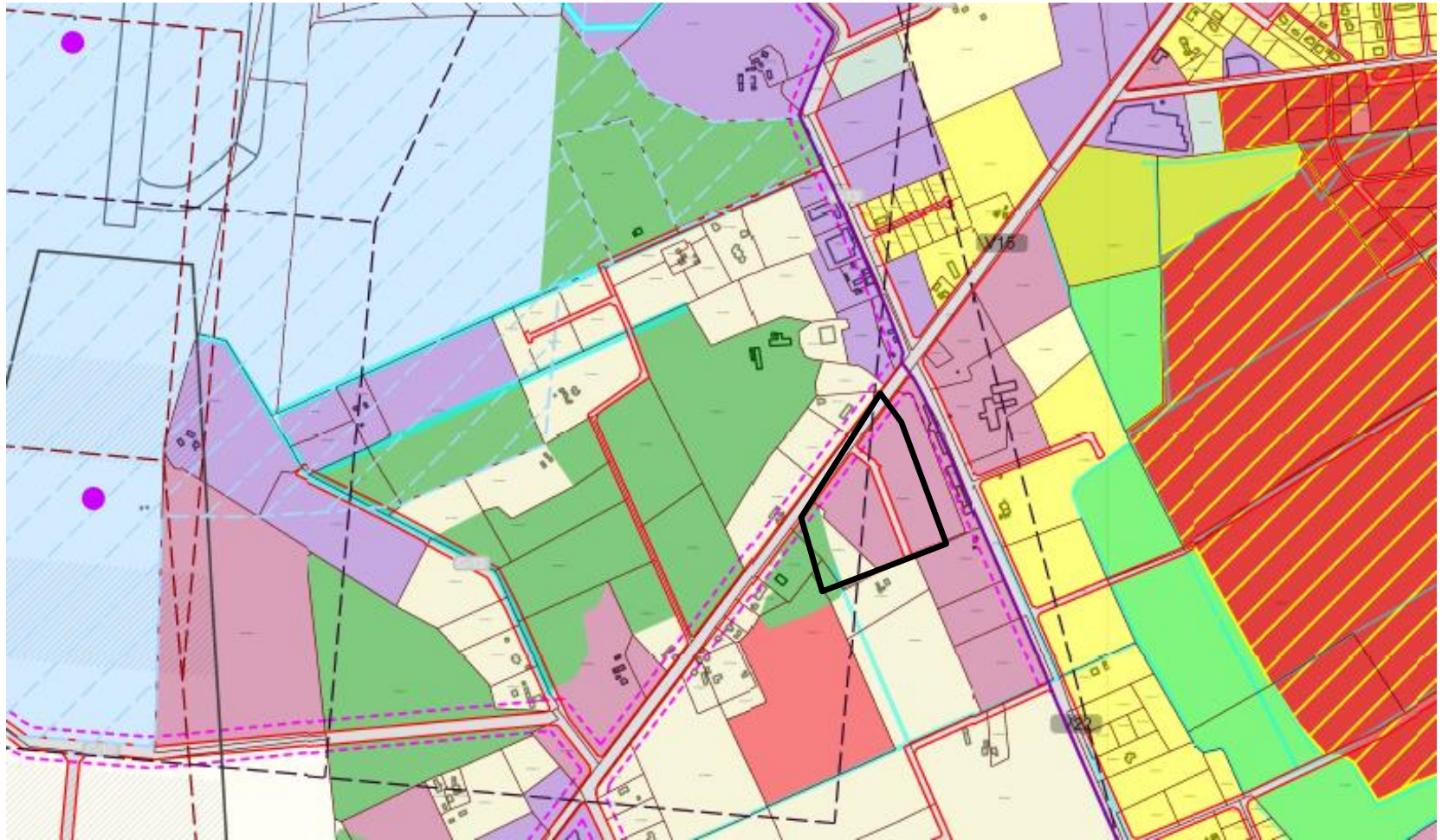
Plot 3: **1.03 ha**



Plot 4: **1.02 ha**

Plot 5: **1.01 ha**



Zonning map



-  - Territory of commercial development and light manufacturing
-  - Landplot area

Girts Brauns
Project Manager, SIA Domuss

Phone: +371 29524148

E-mail: girts@nchriga.lv

www.domuss.lv

